

-60°C Deep Freezer

Powerful Refrigeration • Designed for Storage of Tuna



LT60-150C/ LT60-270C/ LT60-360C

Refrigeration System

- The Freon-free refrigerant, compressor supplied by an international famous brand and EBM fan can guarantee fast cooling and are energy-saving and environmentally friendly;
- The CFC-free Polyurethane foaming technology can ensure great thermal insulation performance.

Temperature Control System

The high-precision microcomputer temperature control system and platinum resistor temperature sensors ensure more precise temperature control.

People-oriented Design

- The high-quality steel plate structure, corrosion-resistant phosphate coating and stainless steel liner are low temperature tolerant and corrosion-resistant.;
- The low noise design can create a comfortable work environment.



LT60-150C

LT60-270C

LT60-360C



Temperature Control System

- High precision microcomputer temperature control, more accurate;
- Chamber temperature can be set within a range from -30 to -60°C;
- High-precision microcomputer temperature control system and platinum resistor temperature sensors ensure more precise temperature control.



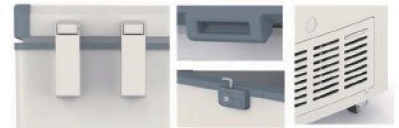
Refrigeration System

- HCFC-free refrigerant, compressor supplied by Secop (previously Danfoss) and EBM fan can guarantee fast cooling and are energy-saving and environmentally friendly;
- CFC free polyurethane foaming technology, perfect insulation performance. Hot gas surrounding line to prevent from condensation.



Security System

- The start delay and stopping interval protection function can ensure reliable operation;
- The well-developed security system with multiple audible & visual alarm function: sensor failure alarm, high & low temperature alarm, power failure alarm, low battery alarm, door open alarm and condenser overheated alarm to ensure the safety sample storage;
- Door with key lock to prevent opening without permission.
- 72 hours back-up battery for display and alarms system during power failure for supportive safety notification.



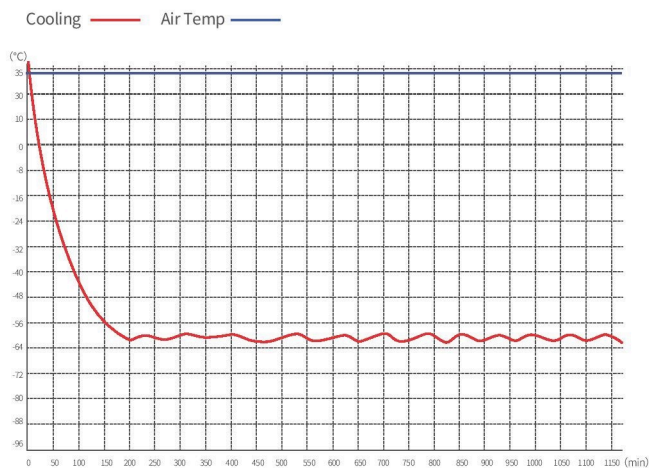
Human-oriented

- The design of upward door opening and the balancing door hinge facilitate door opening;
- High quality phosphate steel structural coating, stainless steel lining and easy cleaning, low noise design, 4 universal casters for easy movement, equipped with door locks to ensure sample safety.

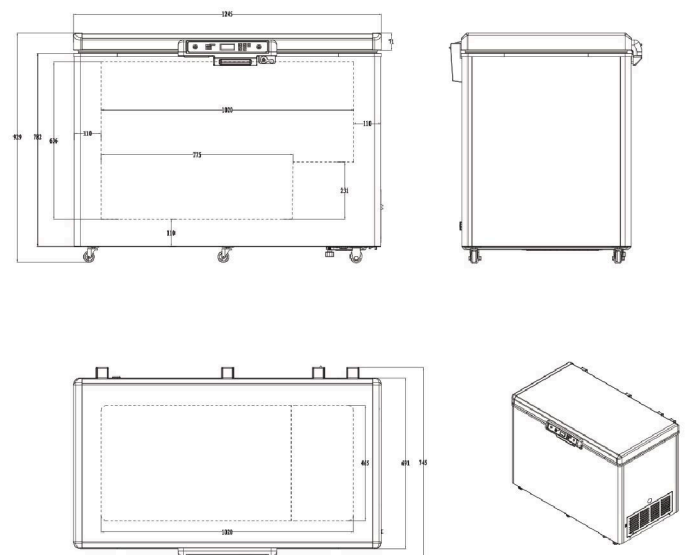
✓ Scope of Application

Suitable for use in blood banks, hospitals, health and disease prevention systems, research institutions, colleges & universities, the electronic industry, biological engineering, laboratories in colleges & universities, military enterprises, deep-sea fishing companies, etc.

🔗 Performance Data / Cooling Curve



📏 External Dimensions



Specification Chart

-60°C Deep Freezer			
Model	LT60-150C	LT60-270C	LT60-360C
Cabinet Type	Chest	Chest	Chest
Capacity(L)	150	270	360
Internal Size(W*D*H)mm	585*465*651	1019*465*651	1308*465*651
External Size(W*D*H)mm	811*775*929	1245*775*929	1534*775*929
Package Size(W*D*H)mm	875*805*991	1332*810*975	1638*815*970
NW/GW(Kgs)	67/74	80/87.5	103/111
Performance			
Temperature Range	-30~-60°C	-30~-60°C	-30~-60°C
Ambient Temperature	16-32°C	16-32°C	16-32°C
Cooling Performance	-60°C	-60°C	-60°C
Climate Class	N	N	N
Controller	Microprocessor	Microprocessor	Microprocessor
Display	LED	LED	LED
Refrigeration			
Compressor	1pc	1pc	1pc
Cooling Method	Direct cooling	Direct cooling	Direct cooling
Defrost Mode	Manual	Manual	Manual
Refrigerant	Mixture gas	Mixture gas	Mixture gas
Insulation Thickness(mm)	110	110	110
Construction			
External Material	SPCC epoxy coating	SPCC epoxy coating	SPCC epoxy coating
Inner Material	Stainless steel	Stainless steel	Stainless steel
Coated Hanging Basket	Optional	Optional	Optional
Door Lock with Key	Yes	Yes	Yes
Foaming Lid	Optional	Optional	Optional
Access Port	1pc. Ø 25 mm	1pc. Ø 25 mm	1pc. Ø 25 mm
Casters	4 (2 caster with brake)	4 (2 caster with brake)	4 (2 caster with brake)
Data Logging/Interval/Recording Time	USB/Record every 10 minute / 2years		
Backup Battery	Yes	Yes	Yes
Alarm			
Temperature	High/Low temperature	High/Low temperature	High/Low temperature
Electrical	Power failure	Power failure	Power failure
System	Sennor error	Sennor error	Sennor error
Electrical			
Power Supply(V/HZ)	220/50	220/50	220/50
Rated Power(W)	330	-	275
Input Power(W)	450	-	440
Power Consumption(KWh/24h)	5.15	-	5
Rated Current(A)	2.08	-	2

*The model, parameters and performance specified in this brochure may be changed without prior notice because of product upgrading.

*There may be differences between the product images shown in this brochure and the actual products. When you are buying any product, please check the actual product.